

New Zealand Cricket Museum

Project: Stairs & Landing

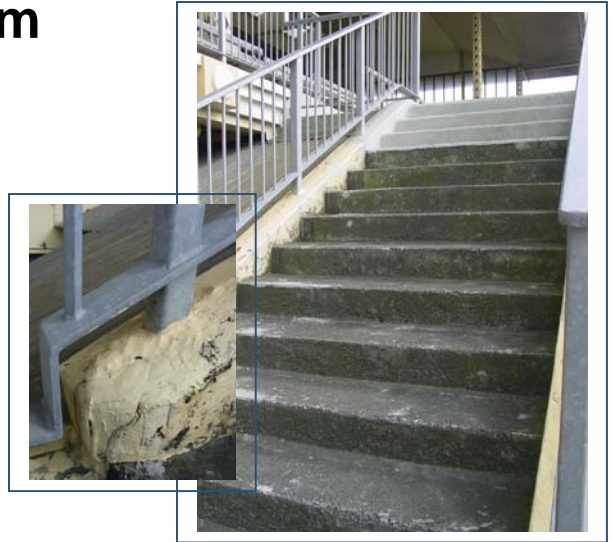
Category: Waterproofing

Completion

Date: October 2005

System: Pedestrian Access

Product:: TUFF STUFF



Job Description

The New Zealand Cricket Museum is located under the RA Vance Stand at New Zealand's oldest cricket ground established in 1924. It displays a full range of cricket memorabilia and artefacts belonging to individuals and teams from well before cricket was organised on a national scale in 1894, through to present day.

The museum was experiencing problems with water and moisture penetrating through the historical RA Vance stairs into the museum library. This was causing damage to the historical items held in the library and causing growth mould.

The stairs were waterproofed and lined with TUFF STUFF and aggregate for a non slip surface.

After...

