

## Mossman Sugar Mill

<b><u>Project:</u></b>	Incubator Tanks
<b><u>Category:</u></b> Protection	Chemical Resistance, Corrosion
<b><u>Completion Date:</u></b>	May 2007
<b><u>Product:</u></b>	Rhino Linings Hi-Chem
<b><u>Rhino Linings Dealer:-</u></b>	Rhino Linings Cairns and Rhino Linings Australasia

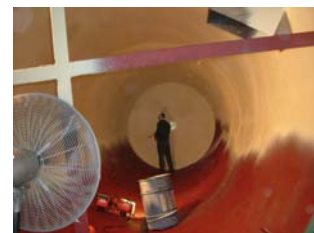


## Job Description

Engineers from the Mossman Sugar Mill in Nth Queensland explored the possibility of exchanging their old Incubator tanks with new stainless steel replacements at a cost of \$100,000.00 each. The alternative was to find a less costly, but effective alternative meeting their requirement for chemical resistance and corrosion protection, and down time.



These large incubator tanks filter impurities from raw sugar juice, the ph level of the juice is 5.4 and over time (approximately 8 to 10 years) the juice has pitted the steal in some parts of the tank and in others has eaten completely through. Other mills use chemicals to remove contaminants from the juice however this procedure once again proves quite costly.



Rhino Linings provided the lining solution required save the tanks being replaced. All three tanks were primed with Rhino RL315 primer and then coated with Rhino Linings Hi-Chem approximately 5 mm thick, with a total of 263 square meters being sprayed.

