



Rhino Linings®

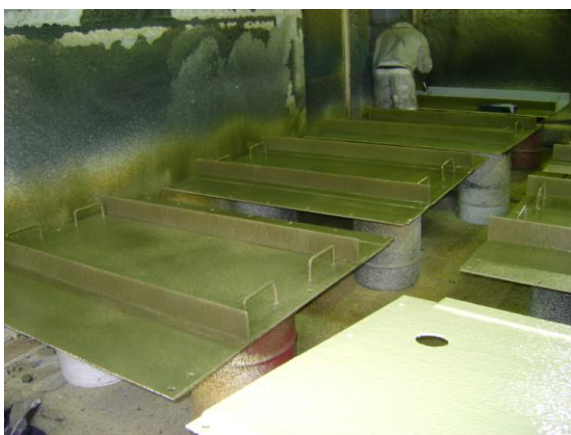
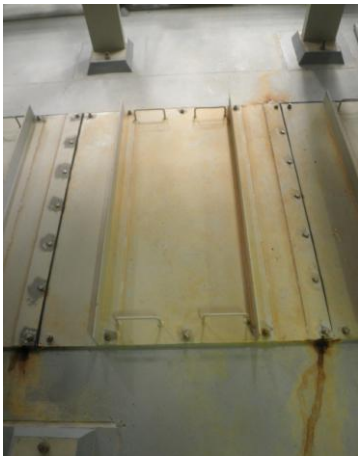
CASE STUDY

Category: Chemical Protection

Project: Backwash Channel Lids – Veolia Water

Applicator: Rhino Linings Bendigo

Rhino Products: RhinoChem 2170



As part of a water filtration treatment plant process, water is filtered, treated and disinfected and used to provide water for households, sporting fields, golf courses and select agricultural uses.

The filtration process is an important stage of the water recycling system. As part of any water treatment plants regular preventative maintenance programme, backwashing is regularly implemented to keep filters clean. Backwashing involves reversing the flow of water through filter media and removing any trapped solids. If this process is not employed on a regular basis, failure can occur in the treatment process.

The filtered water, which contains chemicals such as conditioners and disinfectants, is transported through backwash channels. The water often splashes up on to the underside of the channel lids which can cause corrosion and rusting.

These particular backwash channel lids, located at Veolia Water, were originally coated with a 2-pack epoxy, but due to the rigidity of the epoxy cracks eventually formed and allowed the coating to disintegrate. In answer to this problem, the lids were coated with Rhino Linings RhinoChem 2170, a polyurethane protective spray applied coating.

RhinoChem 2170 spray applied coating is extensively used in the water and wastewater treatment industry due its highly rated chemical resistant properties and flexibility.



www.rhino linings industrial.com.au

1300 887 780

info@rhino linings.com.au

Rhino Linings Australasia Pty Ltd

501-505 Olsen Ave

Molendinar Qld 4214

+61 7 5585 7000

www.rhino linings.com.au